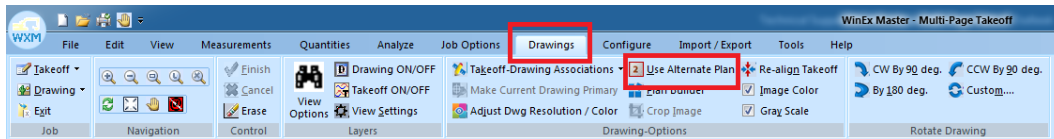


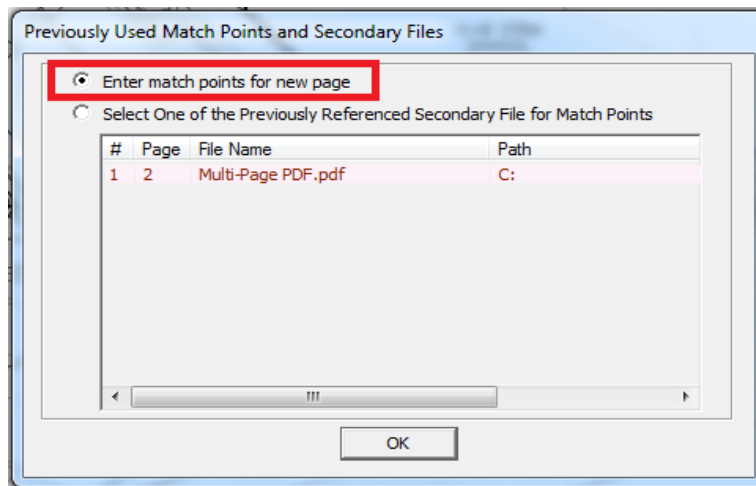
Alternate Plan

Using Alternate Plan: A guide to handling multiple sheets

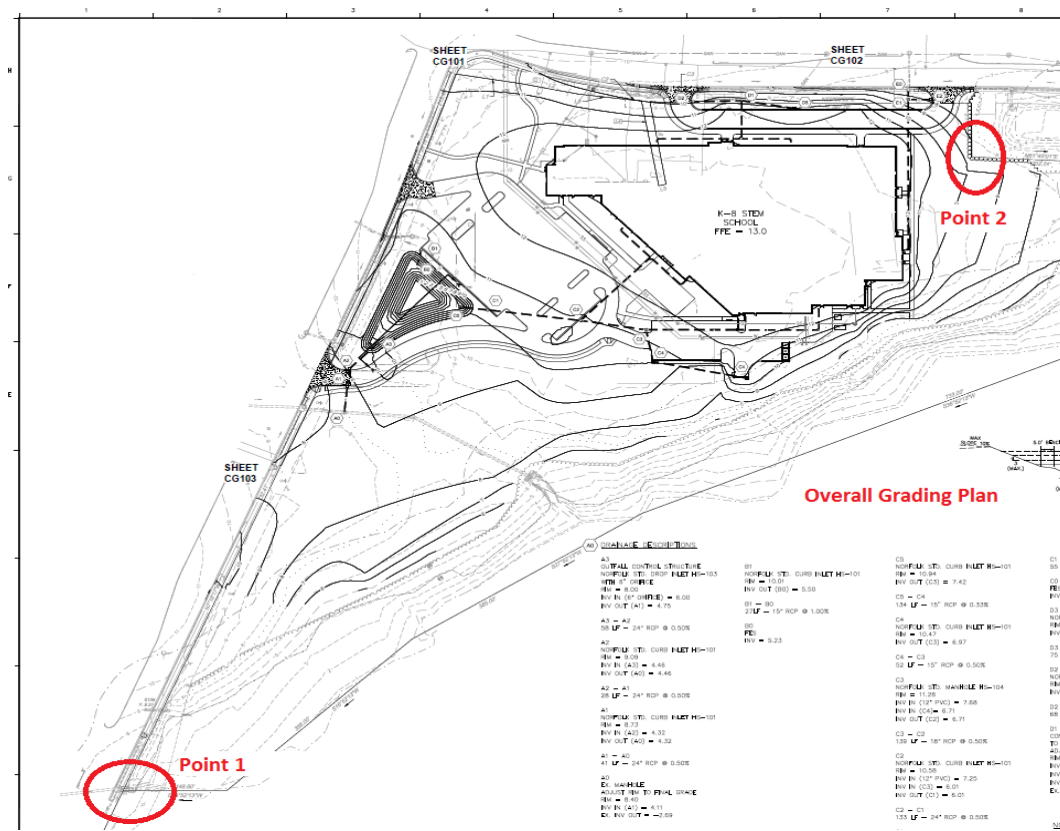
1. Locate Match Points for both pages:
 - a. The Alternate Plan tool allows you to enter measurements or import items from other drawing sheets and then bring the information back to the overall site plan. In order to use the Alternate Plan tool you will need to find two “match” points (or locator points). The software will use these points to create a scale between the drawings and to rotate/align the drawings. Because of this, we need to find the same two points on both drawings and in the same order. These points should not be close together and they should be easy to locate and remember.
2. To use the Alternate Plan tool go to the Drawing Menu → Select “Use Alternate Plan”



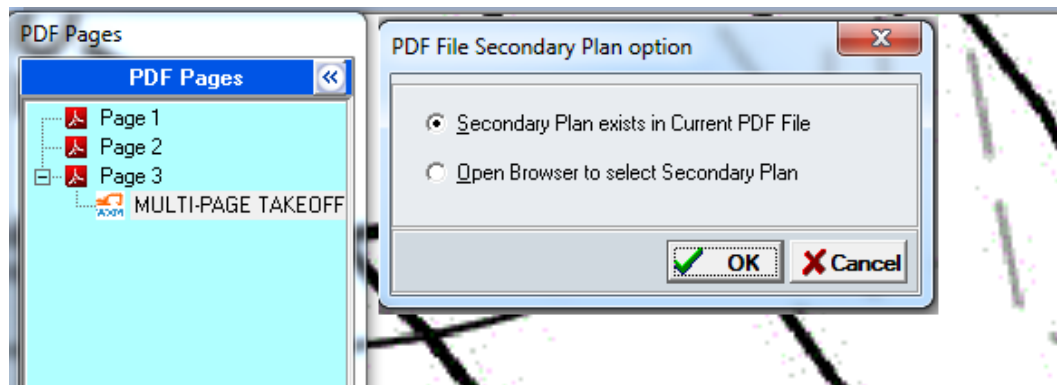
3. Select “Enter match points for new page” in order to go to a new drawing



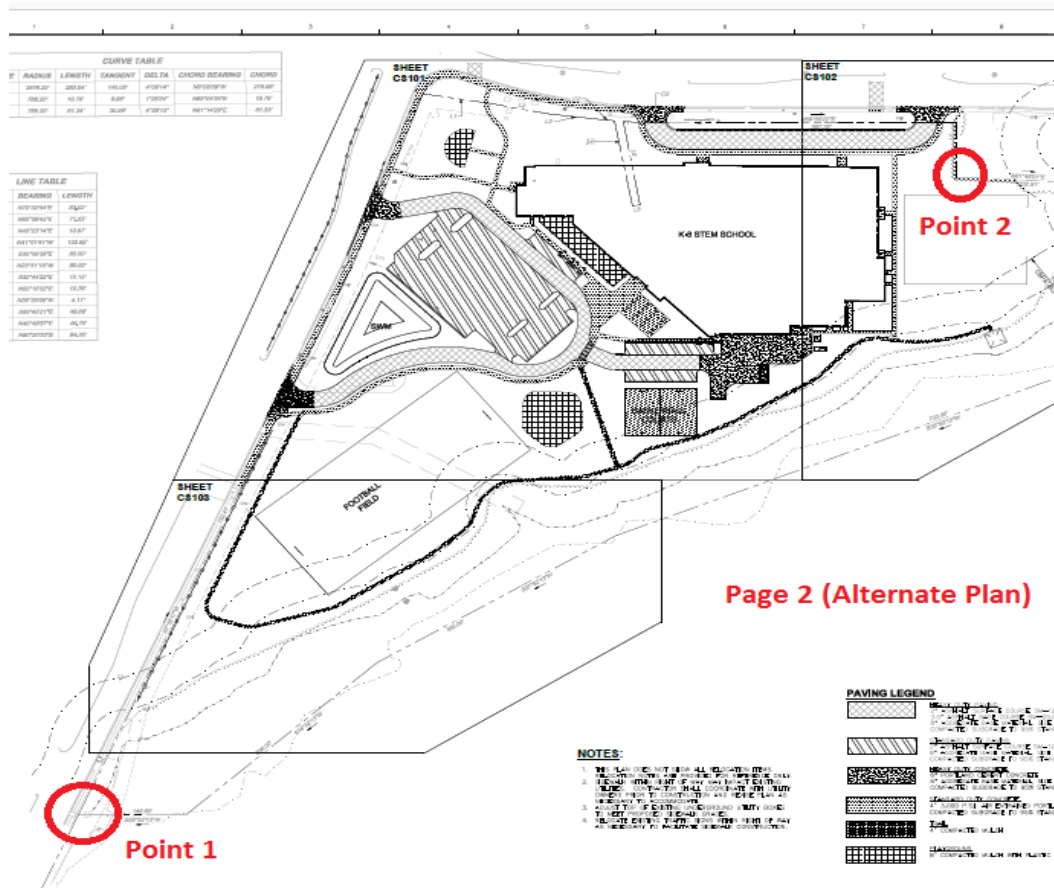
4. Find two points on the current drawing that can also be found on the alternate plan as shown in the image below. Left click to select each match point. For accuracy, zoom in tightly on the point you select.



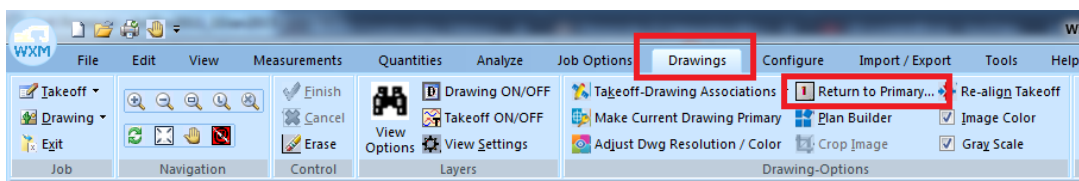
5. After entering the second match point you will be prompted to locate the secondary drawing you want to overlay.
 - a. If the drawing is within the current PDF file, select the first option and then pick the page on the PDF Pages panel on the left. Otherwise, select “Open Browser to select Secondary Plan” in order to locate and open a new PDF file.



6. Locate the match points Alternate Plan. Make sure to select the same two points in the same order. Pick the points as precisely as possible.



7. The takeoff should now move to the alternate plan. Use the Measurements menu to draw new items, use the Import/Export menu to import items to this page.
8. Once you are finished with the page go back to the Drawings Menu → Return to Primary in order to bring back all the new work to the overall site plan.



Feel free to call for a complete walkthrough or any additional questions.

Roctek International
800-826-7763