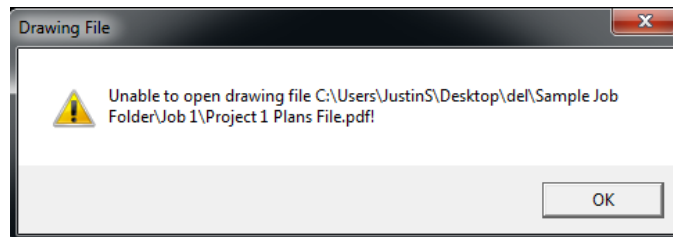


Takeoff-Drawing Associations

Common Error Messages:

If you open a takeoff and the associated drawing does not open (or vice versa), the location of the drawing may have changed. The software remembers the last set location of each takeoff and drawing file. If the takeoff or drawing file is moved, the corresponding file path will change, and the software will need to be told the new file location.

You should receive an error like the one pictured below:

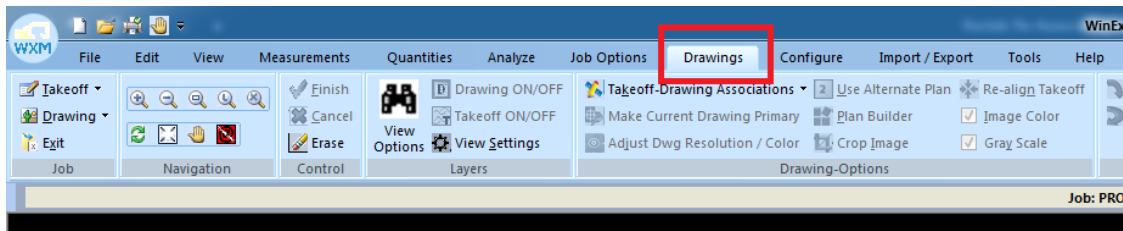


This means the “Project 1 Plans File.PDF” is no longer accessible as it has been deleted, moved, or renamed.

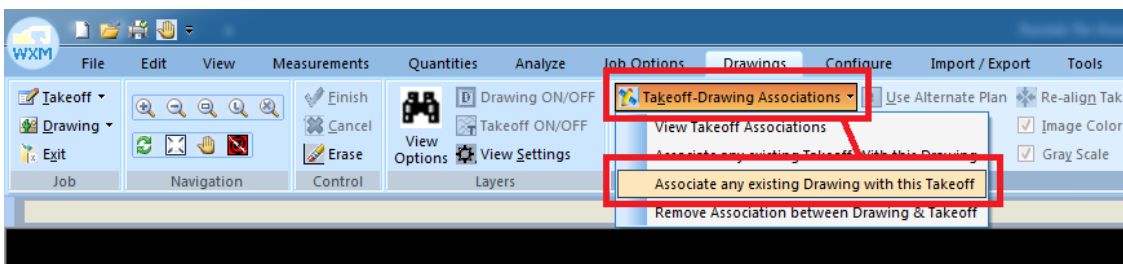
How to Re-Associate:

If you know the location of the drawing you may “Re-Associate” the takeoff back to the drawing with its new location or name. Simply follow the instructions below.

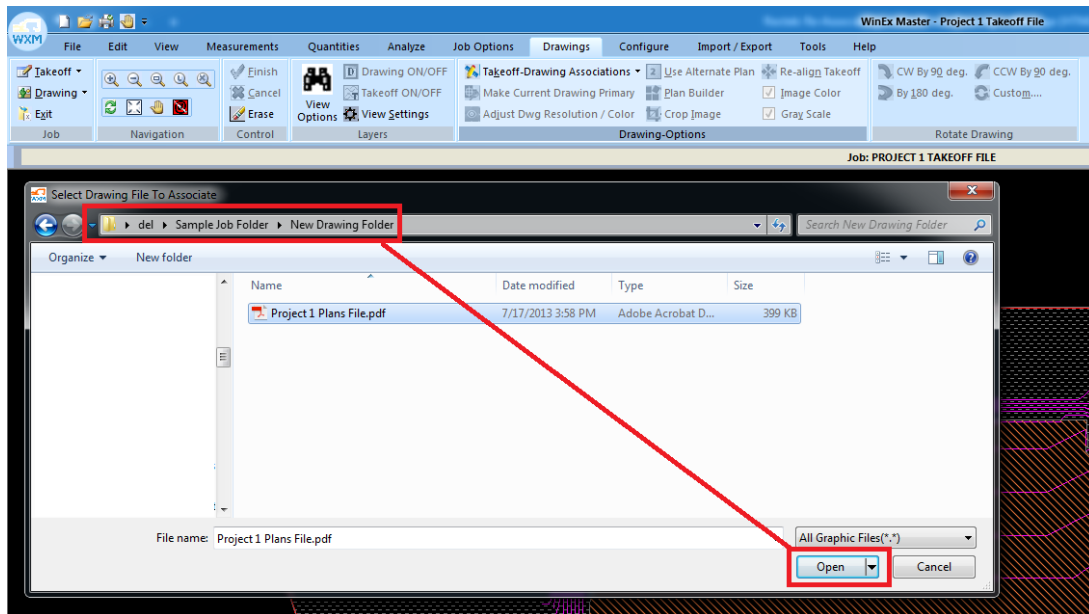
1. Go to the **Drawings Menu**



2. Go to **Takeoff-Drawing Associations** Drop Down Menu and left-click **Associate any existing Drawing with this Takeoff**



3. Navigate to the new location of the drawing, left click the PDF to highlight, and then select **Open**



4. Lastly, please verify that the scale has not changed! Use the Mouse cursor to select a point on the scale and the distance marker in the bottom right to verify the length.

Feel free to call for a complete walkthrough or any additional questions.

Roctek International
800-826-7763